

Don't forget to bring your Harvest Festival tasting glass or buy one at a participating venue on the day.

BICKLEY-CARMEI



5 and 6 MAY, 2018

- DEMONSTRATIONS
- WINE
- FOOD
- CIDER
- BEER
- ENTERTAINMENT
- KIDS ACTIVITIES
- ART &/OR CRAFT
- FRUIT &/OR VEGETABLES

VENUES BOOK OUT QUICKLY, MAKE YOUR RESERVATION FOR LUNCH TODAY

ALDERSYDE ESTATE ●●●●● H4

226 Aldersyde Road, Bickley – Phone: 9293 3309
Festival Opening Hours: 10am-5pm

Welcome to Aldersyde Estate, one of the first wineries to be established in the Perth Hills. Tastings are held in the heritage packing shed which now operates as the winery. Wines are crafted in small batches exclusively from estate grown fruit. Take advantage of our great Harvest Festival sale on mixed red dozens over the weekend. Come and enjoy the beautiful aspect that is Aldersyde Estate.

www.aldersyde.com.au

ASHLEY ESTATE ●●●●● I5

284 Aldersyde Road, Bickley – Phone: 9257 2313
Festival Opening Hours: 10am-5pm

Ashley Estate is exclusively a Pinot Noir producer. Current vintages for tastings and sales are 2013, 2014, 2015 and 2016. A sausage sizzle, soft drinks, tea and coffee are available throughout the weekend.

BICKLEY VALLEY COTTAGE & TRAVELLING SNACK RESTAURANT ●●●●● I6

15 Glenisla Road, Bickley – Phone: 0437 616 869
Festival Opening Hours: 10am-7pm

Check out our unique Pop Up venue, savour our gourmet picnic platters, homemade cakes, coffee and tea while overlooking the beautiful Bickley Valley resplendent in vines, orchards and our own asparagus farm. Learn a little of its fascinating cycle of summer growth, winter hibernation and spring harvest. Perhaps we could tempt you with our gourmet burgers, local wines and beer from Nic's Travelling Snack Restaurant. Take home some seasonal produce and some local arts.

www.bickleyvalleycottage.com

BROOKSIDE VINEYARD and THE VINEYARD KITCHEN ●●●●● I6

5 Loaring Road, Bickley – Phone: 9227 7715
Festival Opening Hours: 10am-5pm

Award-winning wines are matched with superb food from the 'The Vineyard Kitchen' restaurant and **reservations are essential** to enjoy a 3 course lunch for \$50 per head. Our Tapas bar will be serving those passing through and with wines by the glass, a heap of local craft beers plus numerous stall holders selling local artisanal produce its sure to be a big weekend. This year we again help Foodbank WA, see The Vineyard Kitchen Facebook page for further details.

www.vineyardkitchen.com.au

CARLDENN HOMESTEAD WINES ●●●●● G5

80 Mitchell Road, Walliston – Phone: 0419 941 107
Festival Opening Hours: 10am-5pm

A brand new Rosé has been added to our range of fabulous wines. The difference in our wines are the soft acids and tannins, made in a classic European style, with the fruit flavours dominant. Entertaining us will be guitarists Derek and Dominic with a selection of mainstream songs. The Scouts will have their very popular hot beef rolls available on both days! Speak with Dennis for any of your wine questions and don't forget to book your picnic table!

www.carldennwines.com.au

CARMEL CIDER CO. ●●●●● H10

680 Canning Road, Carmel – Phone: 0407 081 437
Festival Opening Hours: 10am-5pm

Pop Up Cidery – Award winning cider in a relaxed family friendly venue – "The Shed". 2017 Australia's Best Pear Cider produced from orchard fruit in Carmel. Book your tickets for an Italian Grazing Table and Cider Tasting \$38pp Saturday & Sunday @12.30pm. **Limited to 50 tickets per day**, for details see our Facebook page or follow us on Instagram: Carmel_cider. Tickets available through trybooking.com.au \$8 Pints all day - Apple cider from the tap.

www.facebook.com/carmelciderco

CORE CIDER HOUSE ●●●●● M11

35 Merrivale Rd, Pickering Brook – Phone: 9293 7583
Festival Opening Hours: Sat 10am-4pm, Sun 10am-5pm

Experience our stunning new cellar door with 180° views of the apple orchards while you enjoy our extensive range of ciders and wines. Relax in our Cider Garden with pizzas, bar menu and live tunes Sat & Sun from 12pm or book for our restaurant on the deck. There's ice-cream, face painting, apple slushies, nature playground and more for the kids! Pick-Your-Own Pink apples 10am-12pm and take home other harvest goodies from the CORE Apple Shed.

www.corecider.com.au

DUE JOLLY WINERY ●●●●● N12

165 Merrivale Rd, Pickering Brook – Phone: 6394 4504
Festival Opening Hours: 10am-5pm

Enjoy personal, friendly service and a variety of new and matured wines while relaxing on our covered outdoor deck, overlooking picturesque views of fruit orchards and the Bickley Valley. Open for tastings and sales. Tea, coffee, cold drinks, and delicious cakes and platters served all day from the café. Ray's famous roasted chestnuts and an assortment of fresh fruit from the orchards also available for sampling and purchase.

www.duejolly.com

FAIRBROSSEN WINERY ●●●●● G8

51 Carmel Road, Carmel – Phone: 9293 5594
Festival Opening Hours: 9am-4pm

Organic, sustainable & local produce awaits at our boutique Winery. Come and check out our wonderful natural wines or if you are looking for somewhere to book your breakfast or lunch, the Valley's newest addition **Tom's Kitchen @ Fairbrossen** will be serving a full a-la-carte menu and will be one of the Valley's most exciting places to eat. **Bookings essential** for a la carte dining, or grazing options also available for the decking and outdoor grassed areas.

www.fairbrossen.com.au

GROWER DIRECT - QUALITY CITRUS ●●●●● C8

170 Welshpool Rd East, Lesmurdie
Phone: 0409 497 945
Festival Opening Hours: 8am-5pm

Lou and Marisa invite you to their fruit and veg shed for an assortment of grower direct produce. Delicious in season fruit and veggies, natural honey, free range eggs, assortments of olive oil, pasta and sauces. Cloudy apple and pear juices available, citrus trees and mixed herbs all on this idyllic location. Come and enjoy.

www.facebook.com/qualitycitrus

HAINAULT VINEYARD and CAFÉ ●●●●● L6

255 Walnut Road, Bickley – Phone: 9293 8339
Festival Opening Hours: 11am-5pm

We invite you to enjoy great wine, food & live music. Sample award-winning wines including Methode Champenoise, dry whites, quality reds, sweet white & fortified. Bickley Valley Brewery beer and Naked Apple cider on tap. **Book** the 2 course set menu, enjoy snacks from the casual menu or **pre-order** a picnic hamper to enjoy on the lawn. *Among The Pigeons* and *Coastal Drift* playing from 12.30pm-3.30pm. Free bouncy castle for the kids.

www.hainault.com.au

LA FATTORIA PERTH HILLS ●●●●● O14

211 Merrivale Rd, Pickering Brook – Phone: 9293 7888
Festival Opening Hours: 11am-4.30pm

Visit us for an Italian food and wine experience. Taste our Italian wines, home grown fruit or sit back and enjoy a 'pick a platter' and hot Rubra coffee with house made cakes. Follow us on Facebook for details of food demonstrations running throughout the weekend showcasing Italian classic recipes. For our unique La Fattoria experience, **book in for our Nonna's Family Table** – an authentic Italian long lunch (see website for menu and pricing details).

www.facebook.com/lafattoriaperthhills
www.lafattoria.com.au

LAWNBROOK ESTATE and THE PACKING SHED @ LAWNBROOK ●●●●● J6

19 Loaring Rd, Bickley – Phone: 0490 678 998
Festival Opening Hours: 10am-4pm

Wine tastings and sales from 10am. A range of light lunch items will be available as well as homemade cake and delicious coffee. Packing Crate Grazing boxes for 2 will be available **by pre-order only**. Order yours **by Monday 30 April**. Live entertainment both days from 1pm-4pm Saturday: *The Broken Pokers*, Sunday: *Brandon Poletti*. Easy parking & family friendly-No Dogs

www.facebook.com/packingshedlawnbrook

MASONMILL GARDENS ●●●●● F9

40 Masonmill Road, Carmel – Phone: 9293 5157
Festival Opening Hours: Sat 8am-9pm, Sun 8am-3.30pm

Situated just 25 minutes from Perth city in ten acres of colourful and inspirational gardens, surrounded by the peaceful Jarrah forest of Carmel. This breathtaking hills location is an ideal wedding venue and a popular tourist attraction to stop off for lunch or dinner. Visit our new Irish Village and enjoy beer on tap in a beautiful relaxed setting, or let the whole family enjoy a game of mini golf.

www.masonmillgardens.com.au

MYATTSFIELD VINEYARD ●●●●● I8

Union Road, Carmel – Phone: 9293 5567
Festival Opening Hours: 10am-5pm

MyattsField is the vineyard/winery of winemakers Josh and Rachael Davenport. Established in 1997, it encompasses two vineyards and a 40 tonne winery in the picturesque Bickley and Carmel Valleys of the Perth Hills wine region.

www.myattsfield.com.au

PLUME ESTATE ●●●●● I7

91 Glenisla Road, Bickley – Phone: 9293 5808
Festival Opening Hours: 11am-5pm

Wine, food, music and the best views the Bickley Valley has to offer! Come and celebrate the end of Harvest with our wide range of hand crafted wines, tasting plates and wood-fired pizzas while listening to live music. Buy a picnic hamper and a bottle of wine and sit in our grassed area overlooking the vines. **Bookings for our undercover area and picnic hampers are essential** on 9293 5808 or cellardoor@plumeestate.com.au

www.facebook.com/Plume-Estate-Vineyard

TONON VINEYARD & WINERY ●●●●● G9

44 Carmel Road, Carmel – Phone: 0417 928 613
Festival Opening Hours: 10am-5pm

Tonon Vineyard & Winery is the newest cellar door in the Bickley-Carmel Valley, specialising in the production of boutique wines, hand-crafted from estate grown alternative grape varieties. Meet the winemaker and viticulturist, Daniel Tonon, for a unique wine tasting experience sampling an exciting range of sparkling and table wines, including Prosecco, Vermentino, Fiano, Malbec, Tempranillo and Sangiovese.

www.tononwines.com.au

DOWNLOAD THE FREE APP



The App offers venue information and an interactive map to help you navigate our spectacular venues. Best of all it's FREE and available for download on your iPhone or Android.

SHUTTLE BUS

exploretooursperth.com

Explore Tours are running **2 FREE buses to venues departing from the Perth Hills Visitor Centre. The service starts at 9.50am and the last round of pickups is at 4pm**

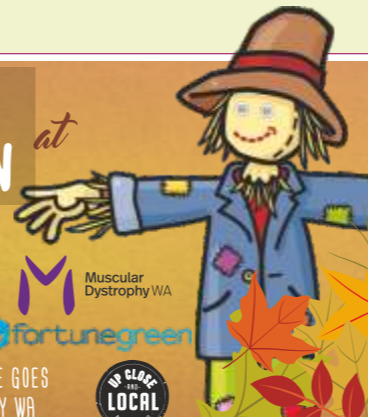
SCARECROW COMPETITION

MYATTSFIELD VINEYARDS

-\$5 ENTRY-

ALL PROCEEDS INCLUDING ENTRY FEE GOES DIRECTLY TO MUSCULAR DYSTROPHY WA

Union Road, Carmel www.myattsfield.com.au



OTHER THINGS TO DO HARVEST WEEKEND

KALAMUNDA ARTISAN MARKET (Map Ref. D2)

Central Kalamunda
Saturday 8:30am – 2:30pm

KALAMUNDA FARMERS MARKET (Map Ref. D2)

Central Kalamunda
Sunday 8am – 12pm

KANYANA WILDLIFE REHABILITATION CENTRE OPEN DAY (Map Ref. B9)

120 Gilchrist Rd, Lesmurdie
Sunday 10am – 4pm

THE HILLS ARTISANS (Map Ref. K10)

Pickering Brook Sports Club,
35 Weston Rd, Pickering Brook
Saturday & Sunday 10am – 3pm

MELVILLE'S ROSE N GARDENS ((Map Ref. F9)

105 Tanner Rd, Carmel
Saturday & Sunday 10am – 4pm

PERTH OBSERVATORY (Map Ref. O7)

337 Walnut Rd, Bickley
Saturday & Sunday 10am – 4pm